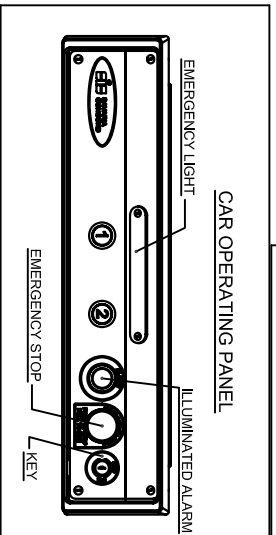
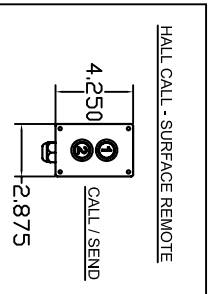
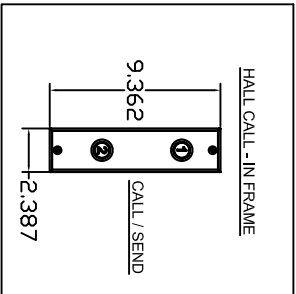
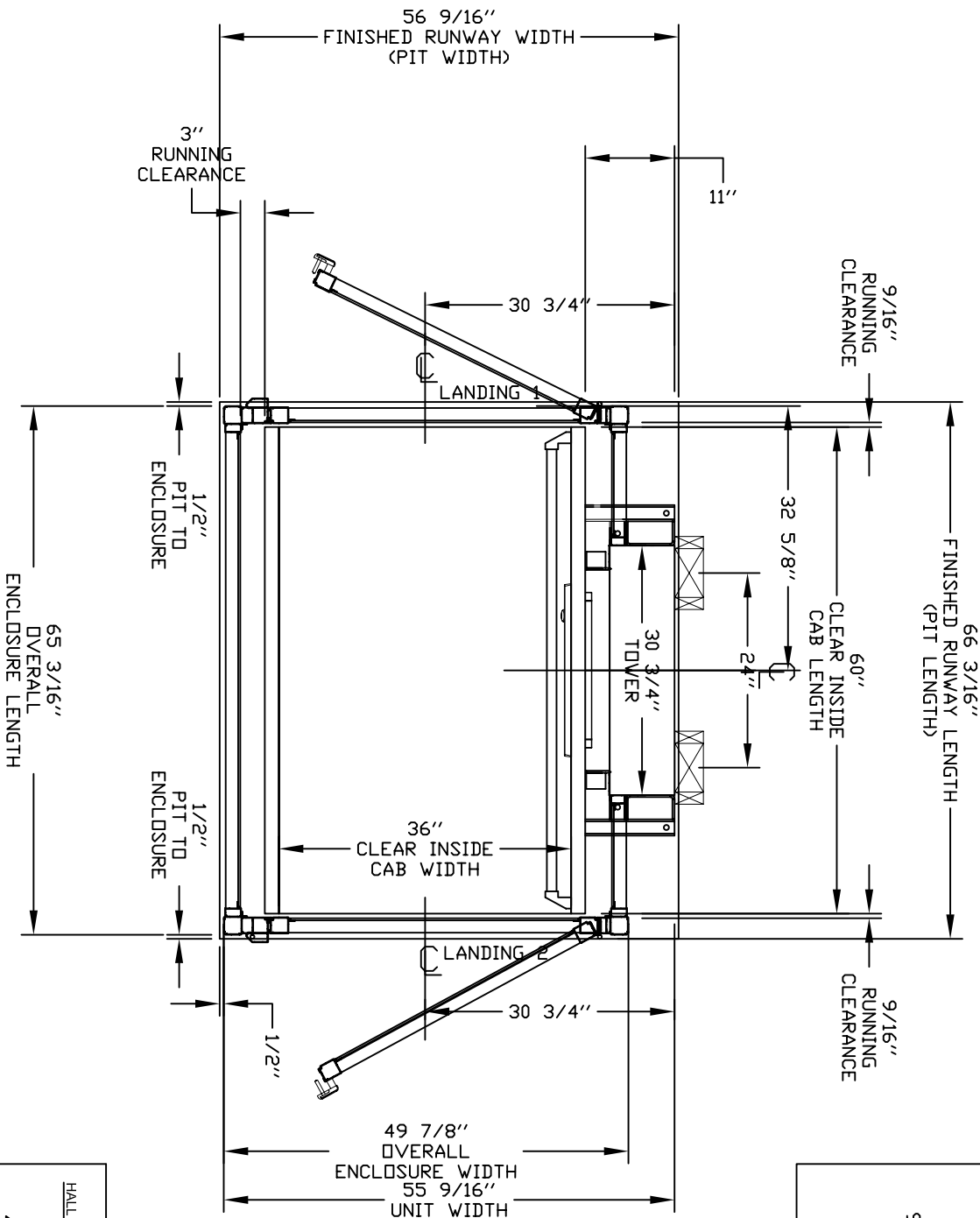
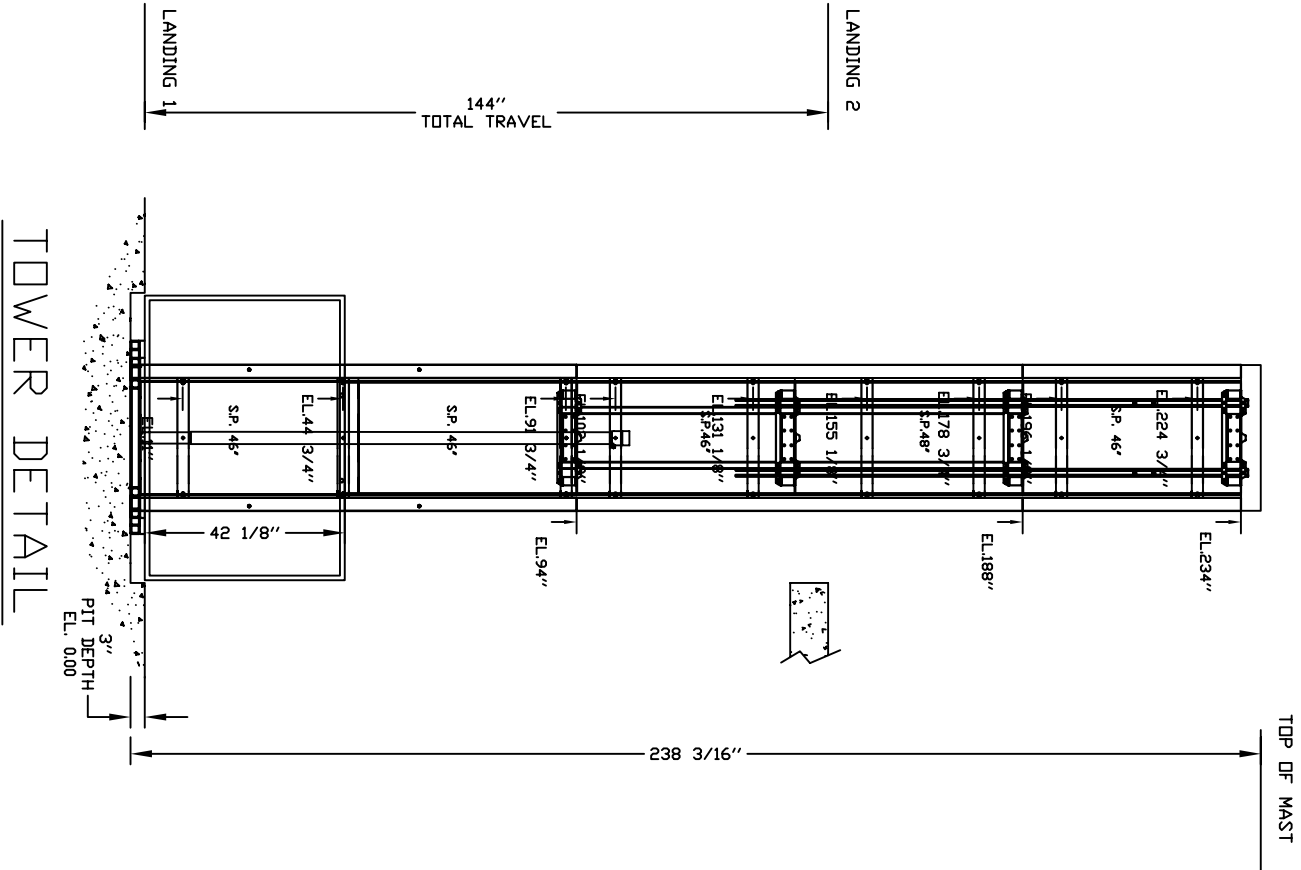


TYPICAL PLAN



PRELIMINARY DRAWING ONLY
DRAWING APPROVAL:

THIS DRAWING REFLECTS OUR INTERPRETATION OF THE INFORMATION PROVIDED BY THE DEALER ON THE ORDER FORM. THIS INFORMATION IS THE DEALER'S RESPONSIBILITY, AND IS THE BASIS FROM WHICH THIS LIFT IS DESIGNED AND MANUFACTURED. PLEASE INDICATE THE REQUESTED ACTION BY CHECKING ONE OF THE FOLLOWING BOXES AND SIGNING BELOW TO AUTHORIZE COMPLETION OF THIS ORDER.

- ☐ APPROVED WITH NO EXCEPTIONS
MANUFACTURE PRODUCT AS PER DRAWING
- ☐ APPROVED WITH EXCEPTIONS, NO REAPPROVAL
REQUIRED
MAKE CHANGES AS NOTED, NO REAPPROVAL DRAWING REQUIRED
- ☐ CHANGE AS NOTED, REAPPROVAL REQUIRED
MAKE CHANGES AS NOTED, SEND CORRECTED DRAWING FOR
REAPPROVAL BEFORE MANUFACTURE

GENERAL ARRANGEMENT
ENCLOSED VERTICAL WHEELCHAIR PLATFORM LIFT

CUSTOMER: **NATIONWIDE LIFTS**

PROJECT: **APEX COMPLETE - 36 WIDE X 60 DEEP**

ADDRESS: **DOORS OPPOSITE SIDES, RAILS ON LEFT**

888-323-8755 INFO@ELEVATORS.COM

DATE: 06/16/15	REVISION DATE: 06/16/15	COMPLETED BY: ANDREW HENRILS	JOB No. P0000001	SHEET No. 1 OF 4
OFFICE USE ONLY: CONFIGURATION VERSION STAMP: 0.0 MODULE VERSION STAMP: 15-143			Variant No. 48571	
Nationwide Lifts www.elevators.com			savaria	

PROVISIONS BY OTHERS

GENERAL

HOISTWAY – THE HOISTWAY MUST BE DESIGNED AND BUILT IN ACCORDANCE WITH ‘SAFETY STANDARD FOR PLATFORM LIFTS AND STAIRWAY CHAIRLIFTS’ OR ‘SAFETY CODE FOR ELEVATORS AND ESCALATORS’ AND ALL STATE AND LOCAL CODES.

PLUMB RUNWAY– DUE TO CLOSE RUNNING CLEARANCES OWNER/ AGENT MUST ENSURE THAT HOISTWAY AND PIT (WHERE PROVIDED) ARE LEVEL, PLUMB (-/+ 1/8” (3 mm)) AND SQUARE AND ARE IN ACCORDANCE WITH THE DIMENSIONS ON THESE DRAWINGS.

MINIMUM OVERHEAD CLEARANCE– OWNER/AGENT MUST ENSURE MINIMUM OVERHEAD CLEARANCE IS IN COMPLIANCE WITH CODES.

CONSTRUCTION SITE– OWNER/AGENT TO PROVIDE ALL MASONRY, CARPENTRY AND DRYWALL WORK AS REQUIRED AND SHALL PATCH AND MAKE GOOD (INCLUDING FINISH PAINTING) ALL AREAS WHERE WALLS/FLOORS MAY REQUIRE TO BE CUT, DRILLED OR ALTERED IN ANY WAY TO PERMIT THE PROPER INSTALLATION OF THE LIFT.

DIMENSIONS– CONTRACTOR/CUSTOMER TO VERIFY ALL DIMENSIONS AND REPORT ANY DISCREPANCIES TO OUR OFFICE IMMEDIATELY.

STRUCTURAL

FLOOR/SUPPORT WALL LOADS– CONTRACTOR TO ASSURE THAT BUILDING AND SHAFT WILL SAFELY SUPPORT ALL LOADS IMPOSED BY THE LIFT EQUIPMENT. REFER TO THE LOAD DIAGRAM ON THIS DRAWING.

MAST TO BE SECURELY FASTENED– WHERE REQUIRED THE MAST MUST BE SECURELY FASTENED TO THE STRUCTURAL SUPPORT WALL. REFER TO WALL / FLOOR SUPPORT LOAD DIAGRAM AND WALL LAG DIMENSIONS ON THIS DRAWING.

WHERE DOORS ARE REQUIRED– SUITABLE LINTELS MUST BE PROVIDED BY OWNER/AGENT. DOOR FRAMES ARE NOT DESIGNED TO SUPPORT OVERHEAD WALL LOADS.

ELECTRICAL

GENERAL– ELECTRICAL EQUIPMENT AND WIRING TO COMPLY WITH SECTION 38 OF CSA C22.1 (CANADA) OR SECTION 620 OF NEC ANSI/NFPA 70 (USA).

POWER SUPPLY–120VAC, 20A, 60HZ, 1PH CIRCUIT THROUGH A FUSE DISCONNECT WITH AUXILIARY CONTACT ON MAIN POWER SUPPLY. PROVIDE TWO 18 AWG CONDUCTORS BETWEEN CONTACT AND CONTROLLER.

LIGHTING–LIGHTING OF 100 LX MIN. AT PLATFORM AND LANDINGS. LIGHTING WITH SWITCH AND ELECTRICAL GFCI OUTLET IN HOISTWAY PIT.

ENTRANCES

UPPER LANDING GATES– WHERE REQUIRED, SMOOTH SOLID BARRIERS ARE TO BE SUPPLIED AND INSTALLED ON BOTH SIDES OF ENTRANCE AT UPPER LEVEL AND MUST BE A MINIMUM OF 42” (1067 mm) HIGH. ENTRANCE ASSEMBLY MUST BE IN PLACE PRIOR TO THIS PROVISION.

FASCIA PANEL BELOW UPPER LEVEL ENTRANCE– WHERE REQUIRED, FASCIA PANEL MUST BE FASTENED TO A SOLID WALL AND BE PERPENDICULAR TO THE FLOOR AND WALLS. HOISTWAY FASCIA IS NOT SELF-SUPPORTING FOR LONG, CONTINUOUS RUNS VOID OF ENTRANCES. ADEQUATE SUPPORT FOR THE FASCIA MUST BE PROVIDED.

ENTRANCE ASSEMBLIES– ENTRANCE ASSEMBLIES MUST BE ADJUSTED TO ALIGN WITH PLATFORM AND INTERLOCK EQUIPMENT.

OTHERS TO ALLOW AN ADEQUATE ROUGH OPENING.
RETURN WALLS– RETURN WALLS AT ENTRANCES MUST BE BUILT-IN BY OTHERS AFTER ENTRANCE ASSEMBLIES ARE IN PLACE. ENTRANCE ASSEMBLY MUST BE SECURELY FASTENED TO WALLS.

GENERAL

CLASSIFICATION:
APPLIED CODE:
SPECIAL NOTE:

MODEL:
CAPACITY:
SPEED:

TRAVEL:
PIT DEPTH:
PLATFORM SIZE:
POWER SUPPLY:
BATTERY BACK UP:

JACK UNIT

STROKE:
PLUNGER O/D:
CYL. O/D:
CYL. I/D:

CONTROLLER

MODEL:
TYPE:
ETL #:
CONTROL VOLTS:
CONTROL AMPS:
H.P.:
AMPS:
MFR.:

SPECIFICATIONS

POWER UNIT

MOTOR:
FLOW:

Enclosed Vertical Wheelchair Platform Lift
ASME A18.1-2008 Section 2 Pub

3.0 HP, 120 VAC
1.15 Gal/min (4.35L/min)

HYDRAULIC DATA

OIL TYPE:

GALLONS REQ'D:

MAXIMUM WORKING PRESSURE:
RELIEF PRESSURE:

MAXIMUM RELIEF PRESSURE:
HYDRAULIC HOSE:
BURST:
FITTINGS:

UNIVIS 32 INDOOR
DEXRON ATF OUTDOOR
1.5 Gal (5.68 L)
2000 psi (13.7 MPa)
WPx125% MAX.
2000 psi (13.7 MPa)
1/4” (6.4 mm) ID
20000 psi (137.9 MPa)
1/4” (6.4 mm) NPT MALE

SUSPENSION CHAIN

2X #50 ROLLER CHAIN
BREAKING STRENGTH:
SAFETY BRAKE:

7171 lbs (31.9 kN) each
TYPE ‘A’



MOUNTING BRACKET

DOORS / GATES / CALL STATIONS

DOOR TYPE	LANDING 1		LANDING 2		LANDING 3		LANDING 4	
	Enclosure	80" Door	Enclosure	80" Door				
ENTRANCE SIDE	a		c					
DOOR SWING	rh		lh					
DOOR INSERT	Clear Plexiglass		Clear Plexiglass					
LOCK TYPE	WR500 Lock (24V)		WR500 Lock (24V)					
AUTO DOOR OPENER	NO		NO					
CUSTOM DOOR WIDTH								
CUSTOM DOOR HEIGHT								
IN FRAME CALL STN.								
CALL STN. TYPE	no		yes					
CALL STN. KEVED								
CALL STN. STOP BUTTON								
CALL STN. MOUNTING	Call/Send Buttons		Call/Send Buttons					
ISOLATED PRODDOR KIT	Not Required		Not Required					
	Surface Mounted Remote		Flush Mounted In Frame					
	No		No					

OPTIONS PROVIDED

EMERGENCY PENDENT PLUG IN MANUAL LOWERING BOX

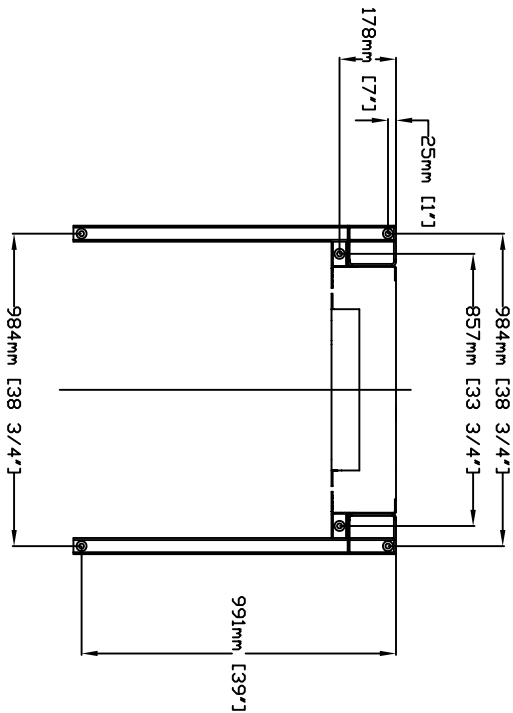
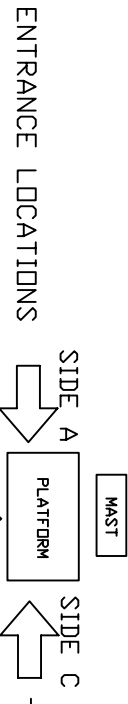
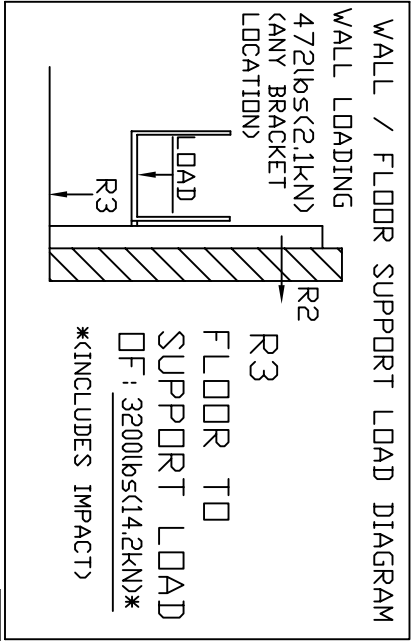
WINGS:	no	RAMP:	No Ramp Required
TOUCH UP PAINT:	1 cans(s)	EXTRA KEYS:	0
BUILDING:	Public Building	WALL FASTENERS:	none
LIGHT CURTAIN:	no	UNDERPAN SENSOR:	no
PHONE OR PHONE PLUG:	No Phone,Plug Incl	COLOR:	Standard Color - Almond Beige

LOCATION: IN DOOR

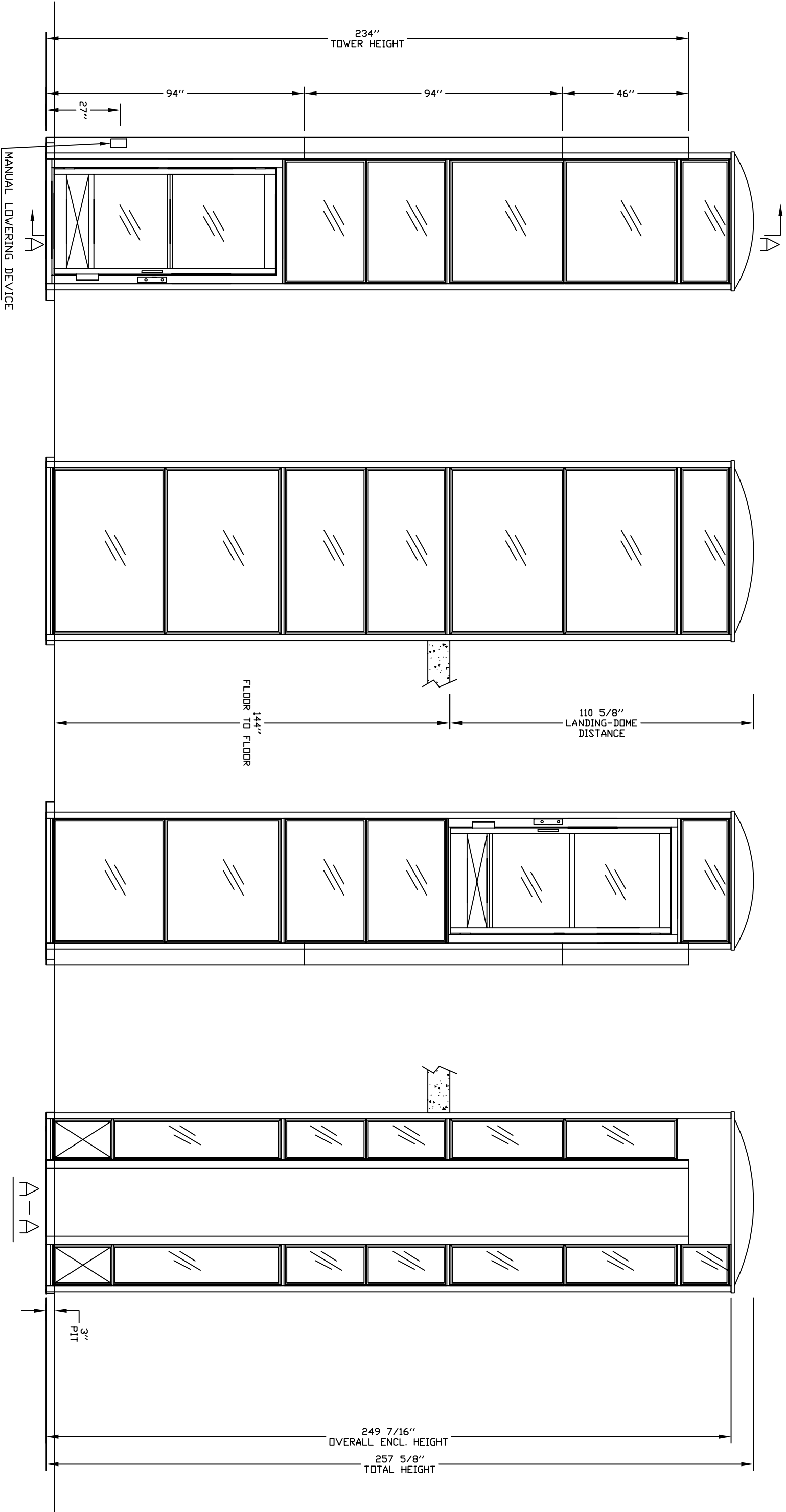
OFFICE USE ONLY:		Port No.	Nationwide Lifts www.elevators.com
CONFIGURATION VERSION STAMP:	0.0		
MODULE VERSION STAMP:	15-1A3		

CUSTOMER: NATIONWIDE LIFTS		DATE:	06/16/15	Variant No. 48571	
PROJECT: APEX COMPLETE - 36 WIDE X 60 DEEP	REVISION DATE:	06/16/15		Savarida™	
ADDRESS: DOORS OPPOSITE SIDES, RAILS ON LEFT	COMPLETED BY:				
888-323-8755	INFO@ELEVATORS.COM				
		JOB No.	P0000002	SHEET No.	4

DATA SHEET



PANEL DRAWING



INSERT Door and Gate
STYLE: SHEET METAL

INSERT Enclosure
STYLE: SHEET METAL

Clear Plexiglass

Clear Plexiglass

ELEVATION VIEWS

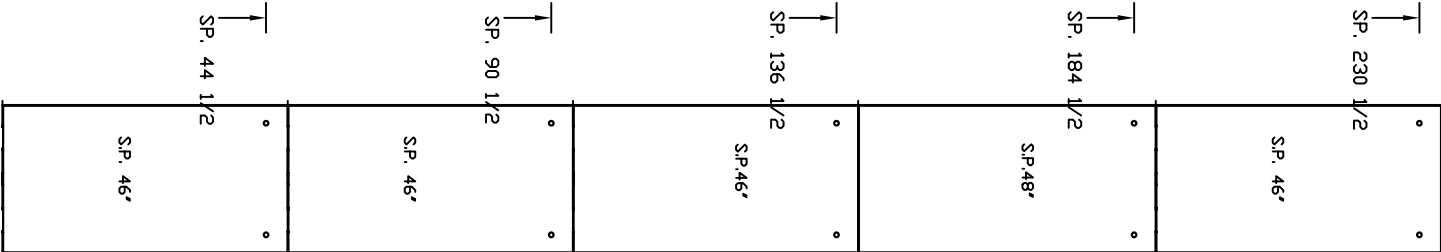
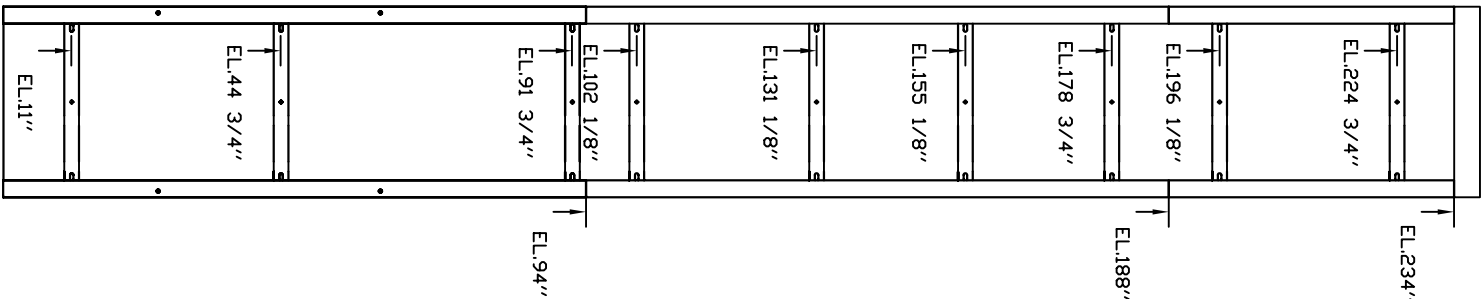
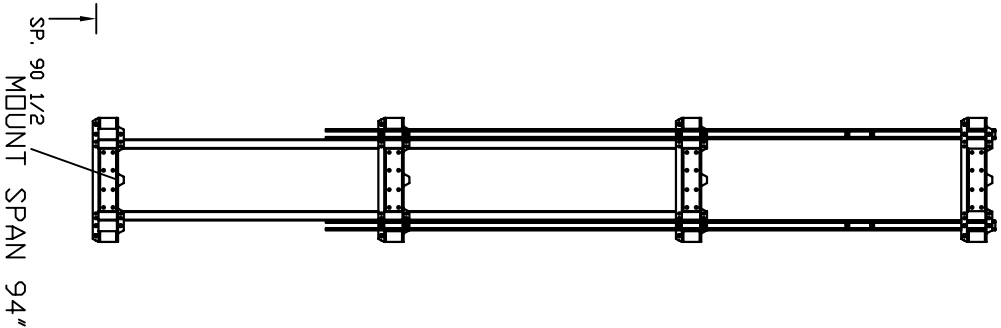
CUSTOMER: NATIONWIDE LIFTS
PROJECT: APEX COMPLETE - 36 WIDE X 60 DEEP
ADDRESS: DOORS OPPOSITE SIDES, RAILS ON LEFT
888-323-8755 INFO@ELEVATORS.COM

OFFICE USE ONLY:
CONFIGURATION VERSION STAMP: 0.0
MODULE VERSION STAMP: B37A13

DATE: 06/16/15
REASON DATE: 06/16/15
COMPLETED BY: [Signature]
Variant No. 48571

Part No. [Blank]
www.nationwidelifts.com
SHEET No. 3 OF 4





EL: MOUNTING BRACKET POSITION

SP: SERVICE PANEL

OFFICE USE ONLY:
CONFIGURATION VERSION STAMP: 0.0
MODULE VERSION STAMP: B37A13

CUSTOMER:	NATIONWIDE LIFTS
PROJECT:	APEX COMPLETE - 36 WIDE X 60 DEEP
ADDRESS:	DOORS OPPOSITE SIDES, RAILS ON LEFT
	888-323-8755 INFO@ELEVATORS.COM
DATE:	06/16/15
REASON DATE:	06/16/15
COMPLETED BY:	ANDREW LUTINS

Port No.	
	

Variant No. 48571



JOB No.	P000000
SHEET No.	4 OF 4